

QuadTech® Register Guidance System with Vector®

Commercial

Newspaper

Publication Gravure

Packaging



The QuadTech® Register Guidance System with Vector® is an automatic, closed-loop color-to-color register-guidance system designed to meet the needs of both commercial and newspaper printers.

The competitive edge

By helping you achieve both high speed and high quality, the QuadTech® Register Guidance System with Vector® can help your organization achieve unique competitive advantages.

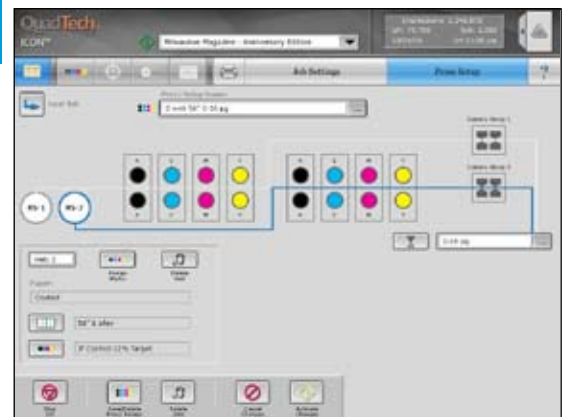
- The Vector's computing speed may well be the industry's fastest.
- Using CCD matrix camera technology, it scans the entire cylinder circumference in about five revolutions at makeready speeds.
- Completing up to 30 captures per second with the web running up to 17,8 M/sec (3,500 ft/min), the camera quickly locks onto register marks and maintains this lock-on throughout the run, even during tension upsets, press-speed changes and roll splices.
- This system's speed is particularly important for maintaining register-mark observation and control following register upsets such as splices or blanket washes.
- This speed also results in superior process control, critical as press speeds and quality requirements continue to increase while run-lengths diminish.
- The camera can be placed on idlers or on unsupported webs after the last printing unit for the ultimate in control speed.



Register Guidance System Run Screen Commercial



Register Guidance System Run Screen Newspaper

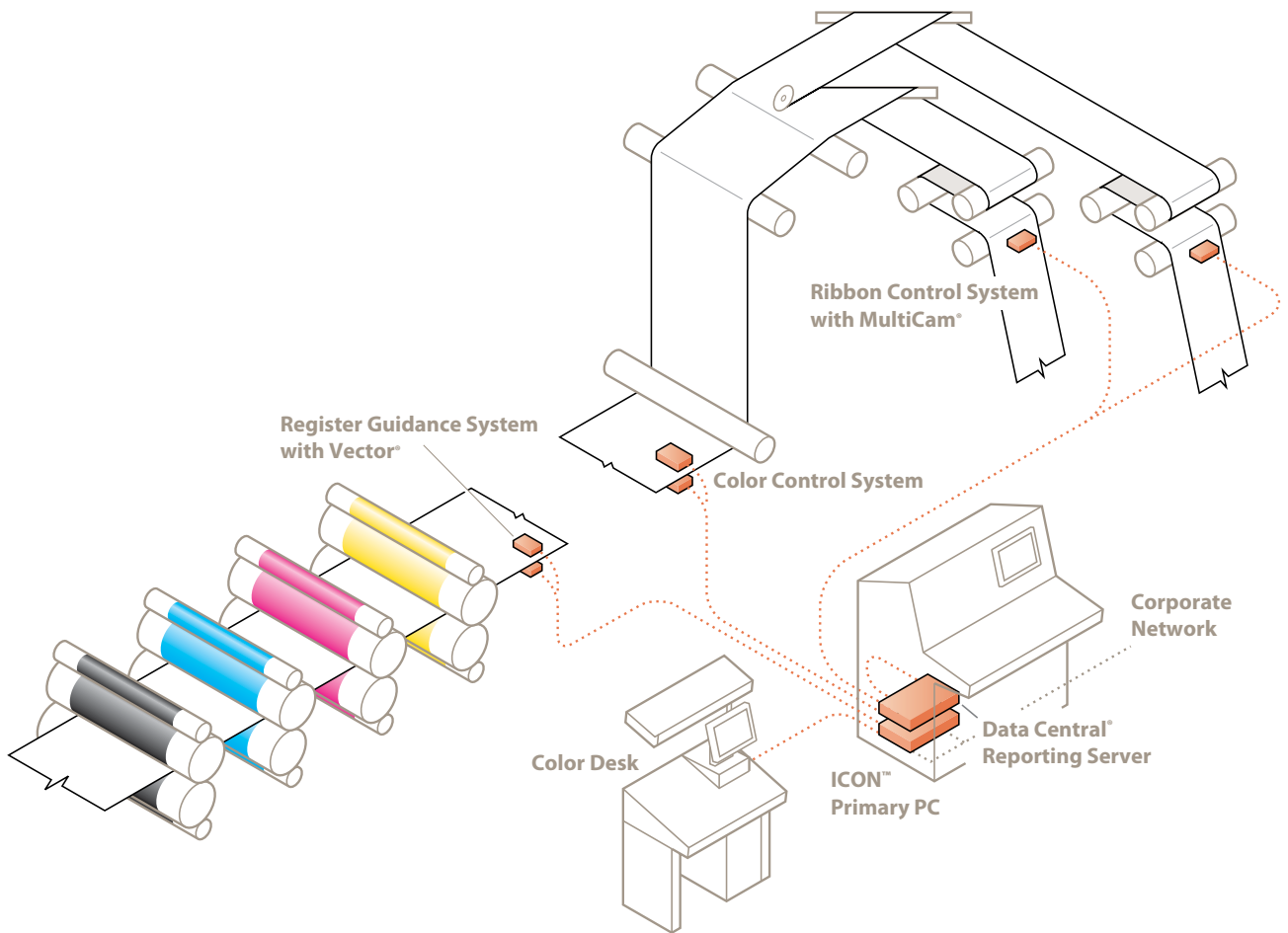


ICON Press Setup Screen

Streamlining makeready

Less waste and higher productivity are the most obvious advantages of the faster makeready made possible by the QuadTech® Register Guidance System with Vector®.

- The Vector's faster speed allows the system to quickly find register marks, saving makeready time without the need for setup of the circumferential register-mark position.
- It also accurately monitors and adjusts registration, reducing waste and increasing operating efficiency.
- The Register Guidance System with Vector® resides on the QuadTech® ICON™ platform, allowing all your control systems to share a single Operator Control Station that minimizes the learning curve and makes it possible to quickly preset multiple controls.
- Camera functions can be preset with information from the press controls themselves or from the ICON™ job-storage library – including mark-position information based on press ink-key positions, mark format and mark-to-register motor assignment.



Flexibility for today and the future

The QuadTech® Register Guidance System with Vector® is an exceptionally flexible system, allowing you to tailor its capabilities precisely to your needs today and supplement them as those needs evolve.

- Featuring a color flat-panel touch display with easy-to-understand menus and graphics, its Operator Control Station offers on-line help and supports multiple languages.
- Additional options include ink-guiding capability, as well as an active OptiGuard™ that uses pressurized air to keep contaminants out and reduce the need for camera cleaning.
- The system can be used to control four-, five-, or six-high applications, as well as shaftless or semi-shaftless presses and standard or shell-cylinder applications.
- As a member of the ICON™-platform family, this system positions you to easily incorporate additional innovations as ICON's capabilities continue to expand.

We'd like to tell you more

At QuadTech, we're leveraging the knowledge we've gained from our printing heritage to develop innovative solutions for the challenges you face every day.

For details, please give us a call today.

QuadTech® Register Guidance System with Vector®

Specifications

Performance:

Measurement resolution	0.01 mm
Maximum operating speed	17,8 m/sec (3500 ft/min)
Maximum number of controlled units	216
Maximum number of motors	1080

System Requirements:

Voltage	100V-240V +/- 10%
Power consumption	Varies based on configuration
Frequency	50 or 60 Hz
Phase	Single Phase

Process Technologies:

Camera sensor type	Proprietary Area Array
Camera transport	Motorized Bars
Registration mark type	Mini Marks Across & Ahead

Environment:

Temperature range	0° C - 55° C (32° F - 131° F)
Maximum humidity	95% noncondensing

Interface Capability:

Supports most major press controls

Operator Control Station:

Type	Universal Touch Screen
Maximum number of operator control stations	12+
Operating System	Microsoft Windows®
Communication means	Ethernet

Certifications:

Meets CE Standards
UL Approved

Options:

Software	Phasing control Anti-embossing Ink Guiding (ink to slit registration) Error Alarms
Hardware	Multiple Encoders Optiguards, Active or Passive

Specifications subject to change without notice.



The Americas
United States
+1 414 566 7500 **TEL**
sales@quadtechworld.com

Europe
France • Germany • Ireland
Italy • The Netherlands •
United Kingdom
+31 294 496222 **TEL**
qtesales@quadtechworld.com

Asia-Pacific
China
+86 21 62882525 **TEL**
chinasales@quadtechworld.com

India
+91 79 2642 1863 **TEL**
indiasales@quadtechworld.com

Tokyo, Japan
+81 48 839 8831 **TEL**
tokyosales@quadtechworld.com

Osaka, Japan
+81 6 6330 0919 **TEL**
osakasales@quadtechworld.com

Singapore
+65 6538 3517 **TEL**
apsales@quadtechworld.com